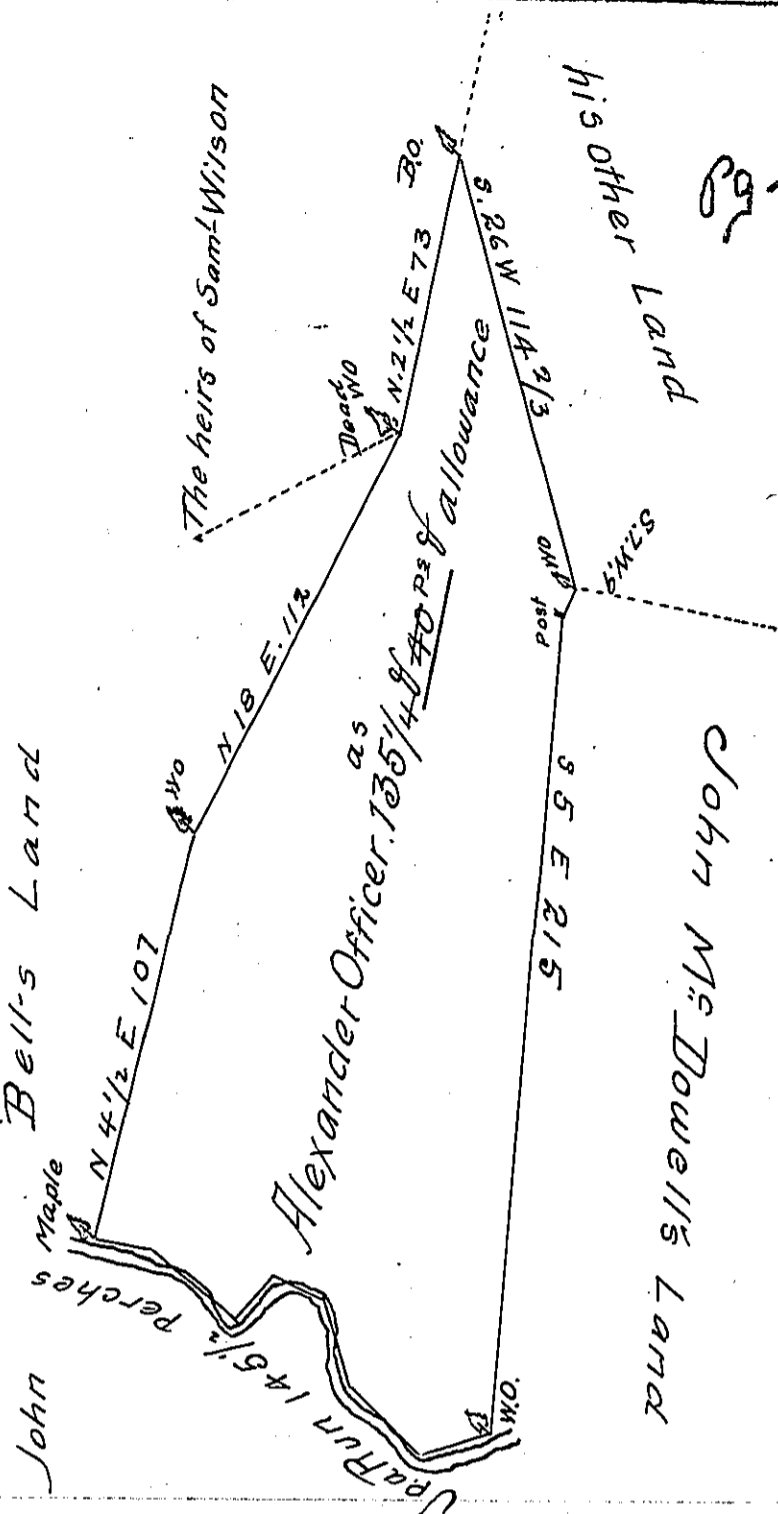


Pg-158

Courses and distances up the Run

S	63	W	17	Perches
N	55	W	26½	
N	27	W	22	
N	73	W	15	
S	30	W	14	
N	60	W	38	
N	87	W	13	



The Draught of a Tract of Land Called — situate in West Pennsborrow Township Cumberland County containing One hundred and Thirty five acres and Forty perches and allowance of Six p Cent for roads &c.

Surveyed the 15th day of February 1785 in pursuance of a Warrant from the Supreme Executive Council of the Common Wealth of Pennsylvania granted to Alexander Officer bearing date at Philadelphia the 3rd day of January A.D. 1785

Sam^l Lyon D.S.

To John Lukens Esq^r
Surveyor General.

IN TESTIMONY that the above is a copy of the original remaining on file in the Department of Internal Affairs of Pennsylvania, made conformably to an Act of Assembly approved the 16th day of February, 1833, I have hereunto set my Hand and caused the Seal of said Department to be affixed at Harrisburg, this twelfth day of March 1906

Isaac D. Brown
Secretary of Internal Affairs.